

MOSACK GROUP

Wholesale Push-To-Connect Product Catalog

TECTITE

by  MOSACK GROUP

3rd Edition



PUSH FITTINGS

Tectite by Mosack Group Push-To-Connect fittings are the fastest, cleanest and simplest way to join any combination of copper, CPVC, PE-RT and PEX pipe without the use of tools, solder, open flame or glue.

Simply insert the pipe to allow the high-strength stainless steel teeth to grip the pipe securely against the specially designed O-ring. Fitting removal and reuse is just as simple using a simple demount clip (sold separately). After assembly, fittings may be rotated for simpler installation in tight spaces.

All Tectite by Mosack Group fittings are approved for use in both potable water and hydronic heating piping systems.

FEATURES

- Constructed of lead free dezincification resistant (DZR) brass for superior reliability
- Push-to-connect joints require no heat, solder, solvents or tools
- Push-to-connect design allows for a simple and fast installation on any combination of copper, PEX, CPVC or PE-RT pipe
- Corrosion resistant for greater longevity
- Lifetime warranty on most fittings. Refer to the warranty on page 35 for item specific information.

PERFORMANCE RATING

- Maximum Working Pressure: 200 psi
- Temperature Range: 32°-250° F
- Approved for behind-the-wall with no access and burial
- Ideal for potable water and hydronic heating applications

APPROVALS

- NSF/ANSI NSF 61/372/14
- ASSE 1061
- IAPMO cUPC® File Listings: 4951

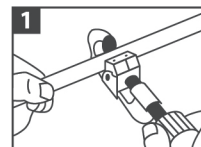
INSTRUCTIONS

Squarely cut the pipe to desired length. Mark the insertion depth using the depth gauge. Push pipe and twist into the fitting until the fitting edge meets the depth line.

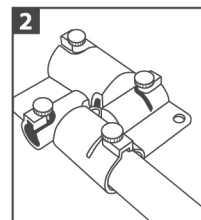
Fitting removal and reuse is just as simple using a demount clip. After assembly, fittings may be rotated for simpler installation in tight spaces.



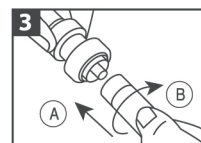
Installation



Cut pipe.

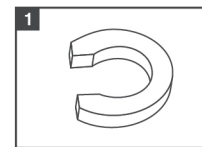


Mark insertion depth using the depth gauge (sold separately).

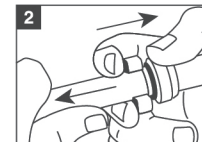


Push pipe (A) and twist (B) into fitting until fitting edge meets depth line.

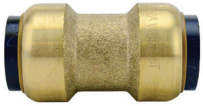
Removal



Removal tool (sold separately).



Place tool around pipe next to fitting. Press tool toward fitting while pulling pipe from fitting.



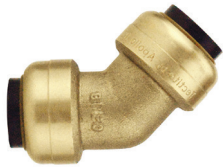
COUPLINGS

Part No.	Description	Pkg Qty	Carton Qty
FSBC14	1/4 in. Push-To-Connect Brass Coupling	1	12
FSBC38	3/8 in. (1/2 in. O.D.) Push-To-Connect Brass Coupling	1	12
FSBC1238	1/2 in. x 3/8 in. Push-To-Connect Brass Reducer Coupling	1	12
FSBC12	1/2 in. Push-To-Connect Brass Coupling	1	24
FSBC126JR	1/2 in. Push-To-Connect Brass Coupling (Jar)	6	48
FSBC12SL	1/2 in. Push-To-Connect Brass Slip Repair Coupling	1	6
FSBC12SLEZ	1/2 in. Push-To-Connect Brass EZ-Slip Repair Coupling	1	6
FSBIPSC12	1/2 in. IPS x 1/2 in. CTS Push-To-Connect Brass Conversion Coupling	1	6
FSBIPSTEM12	1/2 in. IPS Push-To-Connect x 1/2 in. CTS Street Transition Adapter	1	6
FSBPBC12	1/2 in. Push-To-Connect Brass Polybutylene Conversion Coupling	1	12
FSBC3412	3/4 in. x 1/2 in. Push-To-Connect Brass Reducer Coupling	1	12
FSBC34	3/4 in. Push-To-Connect Brass Coupling	1	24
FSBC346JR	3/4 in. Push-To-Connect Brass Coupling (Jar)	6	24
FSBC34SL	3/4 in. Push-To-Connect Brass Slip Repair Coupling	1	6
FSBC34SLEZ	3/4 in. Push-To-Connect Brass EZ-Slip Repair Coupling	1	6
FSBIPSC34	3/4 in. IPS x 3/4 in. CTS Push-To-Connect Brass Conversion Coupling	1	6
FSBIPSC34SL	3/4 in. Push-To-Connect Brass PVC Slip Repair Coupling	1	6
FSBIPSTEM34	3/4 in. IPS Push x 3/4 in. CTS Brass Street Transition Adapter	1	6
FSBPBC34	3/4 in. Push-To-Connect Brass Polybutylene Conversion Coupling	1	6
FSBC134	1 in. x 3/4 in. Push-To-Connect Brass Reducer Coupling	1	6
FSBC1	1 in. Push-To-Connect Brass Coupling	1	6
FSBC1SL	1 in. Push-To-Connect Brass Slip Repair Coupling	1	3
FSBIPSC1	1 in. IPS x 1 in. CTS Push-To-Connect Brass Conversion Coupling	1	3
FSBIPSC1SL	1 in. Push-To-Connect Brass PVC Slip Repair Coupling	1	6
FSBIPSTEM1	1 in. IPS Push x 1 in. CTS Brass Street Transition Adapter	1	6



90° ELBOWS

Part No.	Description	Pkg Qty	Carton Qty
FSBME1438	1/4 in. Push-To-Connect x 3/8 in. MPT Brass 90° Elbow	1	6
FSBDWE1434	1/4 in. (3/8 in. O.D.) Push x 3/4 in. GHT Brass 90° Dishwasher Elbow	1	6
FSBE38	3/8 in. Push-To-Connect Brass 90° Elbow Fitting	1	6
FSBME1238	1/2 in. Push-To-Connect x 3/8 in. MPT Brass 90° Elbow	1	6
FSBE12	1/2 in. Push-To-Connect Brass 90° Elbow	1	24
FSBE126JR	1/2 in. Push-To-Connect Brass 90° Elbow (Jar)	6	48
FSBE12STR	1/2 in. Push-To-Connect Brass Street 90° Elbow	1	12
FSBE12V	1/2 in. Push-To-Connect Brass 90° Elbow with Drain/Vent	1	6
FSBFE12	1/2 in. Push-To-Connect x 1/2 in. FPT Brass 90° Elbow	1	12
FSBME12	1/2 in. Push-To-Connect x 1/2 in. MPT Brass 90° Elbow	1	6
FSBE3412	3/4 in. x 1/2 in. Push-To-Connect Brass 90° Reducer Elbow	1	6
FSBE34	3/4 in. Push-To-Connect Brass 90° Elbow	1	24
FSBE346JR	3/4 in. Push-To-Connect Brass 90° Elbow (Jar)	6	24
FSBE34STR	3/4 in. Push-To-Connect Brass Street 90° Elbow	1	6
FSBE34V	3/4 in. Push-To-Connect Brass 90° Elbow with Drain/Vent	1	6
FSBE1	1 in. Push-To-Connect Brass 90° Elbow	1	3



45° ELBOWS

Part No.	Description	Pkg Qty	Carton Qty
FSBE1245	1/2 in. Push-To-Connect Brass 45° Elbow	1	12
FSBE3445	3/4 in. Push-To-Connect Brass 45° Elbow	1	12



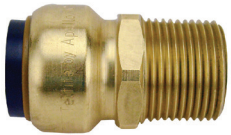
DROP EAR ELBOWS

Part No.	Description	Pkg Qty	Carton Qty
FSBDEE12	1/2 in. Push-To-Connect x 1/2 in. FPT Brass 90° Drop Ear Elbow	1	12
FSBDEE12P	1/2 in. Push-To-Connect Brass 90° Drop Ear Elbow	1	6
FSBDEE34P	3/4 in. Push-To-Connect Brass 90° Drop Ear Elbow	1	12



FEMALE ADAPTERS

Part No.	Description	Pkg Qty	Carton Qty
FSBFA1412	1/4 in. (3/8 in. O.D.) Push x 1/2 in. FPT Brass Reducing Adapter	1	12
FSBFA3812	3/8 in. (1/2 in. O.D.) Push x 1/2 in. FPT Brass Reducing Adapter	1	12
FSBFA12	1/2 in. Push-To-Connect x FPT Brass Female Adapter	1	24
FSBFA126JR	1/2 in. Push-To-Connect FPT Brass Female Adapter (Jar)	6	48
FSBFA1234	1/2 in. Push-To-Connect x 3/4 in. FPT Brass Reducing Adapter	1	6
FSBFA34	3/4 in. Push-To-Connect x FPT Brass Female Adapter	1	12
FSBFA1	1 in. Push-To-Connect x FPT Brass Female Adapter	1	3



MALE ADAPTERS

Part No.	Description	Pkg Qty	Carton Qty
FSBMA1412	1/4 in. (3/8 in. O.D.) Push x 1/2 in. MPT Brass Reducing Adapter	1	6
FSBMA3812	3/8 in. (1/2 in. O.D.) Push x 1/2 in. MPT Brass Reducing Adapter	1	12
FSBMA12	1/2 in. Push-To-Connect x MPT Brass Male Adapter	1	24
FSBMA126JR	1/2 in. Push-To-Connect x MPT Brass Male Adapter (Jar)	6	24
FSBMA1234	1/2 in. Push-To-Connect x 3/4 in. MPT Brass Reducing Adapter	1	6
FSBMA3412	3/4 in. Push-To-Connect x 1/2 in. MPT Brass Reducing Adapter	1	6
FSBMA34	3/4 in. Push-To-Connect x MPT Brass Male Adapter	1	24
FSBMA134	1 in. Push-To-Connect x 3/4 in. MPT Brass Reducing Adapter	1	3
FSBMA1	1 in. Push-To-Connect x MPT Brass Male Adapter	1	3
FSBIP SMA12	1/2 in. IPS Push-To-Connect x 1/2 in. CTS Brass Male Adapter	1	6
FSBIP SMA34	3/4 in. Push-To-Connect PVC IPS x 3/4 in. MPT Brass Male Adapter	1	6



MISCELLANEOUS ADAPTERS

Part No.	Description	Pkg Qty	Carton Qty
FSBSLA12	1/2 in. Push-To-Connect x CTS Brass Street Slip Adapter	1	6
FSBSLA34	3/4 in. Push-To-Connect x CTS Brass Street Slip Adapter	1	6
FSBSLA1	1 in. Push-To-Connect x CTS Brass Street Slip Adapter	1	6



TEES

Part No.	Description	Pkg Qty	Carton Qty
FSBT14	1/4 in. Push-To-Connect Brass Tee	1	6
FSBT38	3/8 in. Push-To-Connect Brass Tee	1	6
FSBT121238	1/2 in. x 1/2 in. x 3/8 in. Push-To-Connect Brass Reducer Tee	1	12
FSBT12	1/2 in. Push-To-Connect Brass Tee	1	24
FSBT126JR	1/2 in. Push-To-Connect Brass Tee (Jar)	6	24
FSBT12SLCTS	1/2 in. Push-To-Connect Brass x Push-To-Connect x Copper Tube Size Adapter Slip Tee	1	6
FSBT1212IPS12	1/2 in. CTS x 1/2 in. CTS x 1/2 in. IPS Push-To-Connect Brass Slip Tee	1	6
FSBT1212CTS12	1/2 in. IPS x 1/2 in. IPS x 1/2 in. CTS Push-To-Connect Brass Slip Tee	1	6
FSBT12SL	1/2 in. Push-To-Connect Brass Slip Tee	1	6
FSBT12SLF	1/2 in. Push-To-Connect Brass x Push-To-Connect x FPT Slip Tee Fitting	1	6
FSBT12STR	1/2 in. Push x 1/2 in. Push x 1/2 in. CTS Brass Street Outlet Tee	1	12
FSBT341212	3/4 in. x 1/2 in. x 1/2 in. Push-To-Connect Brass Reducer Tee	1	6
FSBT341234	3/4 in. x 1/2 in. x 3/4 in. Push-To-Connect Brass Reducer Tee	1	6
FSBT343412	3/4 in. x 3/4 in. x 1/2 in. Push-To-Connect Brass Reducer Tee	1	12
FSBT34	3/4 in. Push-To-Connect Brass Tee	1	12
FSBT34F	3/4 in. Push-To-Connect x Push-To-Connect x Female Pipe Thread Tee	1	6
FSBT3434IPS34	3/4 in. CTS x 3/4 in. CTS x 3/4 in. IPS Push-To-Connect Brass Slip Tee	1	6
FSBT3434CTS34	3/4 in. IPS x 3/4 in. IPS x 3/4 in. CTS Push-To-Connect Brass Slip Tee	1	6
FSBT34SL	3/4 in. Push-To-Connect Brass Slip Tee Fitting	1	6
FSBT34SLF	3/4 in. Push-To-Connect x Push-To-Connect x FPT Brass Slip Tee Fitting	1	6
FSBT34STR	3/4 in. Push x 3/4 in. Push x 3/4 in. CTS Brass Street Outlet Tee	1	6
FSBTANKTEE	3/4 in. Push-To-Connect x FPT x FPT Expansion Tank Tee	1	5
FSBT1134	1 in. x 1 in. x 3/4 in. Push-To-Connect Brass Reducer Tee	1	3
FSBT1	1 in. Push-To-Connect Brass Tee	1	3
FSBT11IPS1	1 in. CTS x 1 in. CTS x 1 in. IPS Push-To-Connect Brass Slip Tee	1	6
FSBT11CTS1	1 in. IPS x 1 in. IPS x 1 in. CTS Push-To-Connect Brass Slip Tee	1	6



MULTI-PORT TEES

Part No.	Description	Pkg Qty	Carton Qty
FSBM2PTC	3/4 in. Brass Push-To-Connect Inlet x 1/2 in. Brass Push-To-Connect Outlets 2-Port Closed Manifold	1	6
FSBM2PTO	3/4 in. Brass Push-To-Connect Inlet x 1/2 in. Brass Push-To-Connect Outlets 2-Port Open Manifold	1	6
FSBM3PTOV2	3/4 in. Brass Push-To-Connect Inlets with 3-Port Open Manifold 1/2 in. Push-To-Connect Outlets	1	6
FSBM3PTO	3/4 in. Brass Push-To-Connect Inlet x 3/4 in. CTS Stem 3-Port Open Manifold with 1/2 in. Brass Push-To-Connect Outlets	1	6



VALVES

Part No.	Description	Pkg Qty	Carton Qty
FSBVA1214	1/2 in. Push x 1/4 in. Push Chrome-Plated Brass 1/4-Turn Angle Stop Valve	1	6
FSBVA1214C	1/2 in. Push x 1/4 in. O.D. Comp Chrome-Plated Brass 1/4-Turn Angle Stop Valve	1	6
FSBVS1214	1/2 in. Push x 1/4 in. Push Chrome-Plated Brass Qtr-Turn Straight Stop Valve	1	6
FSBVS1214C	1/2 in. Push x 1/4 in. O.D. Comp Chrome-Plated Brass Qtr-Turn Straight Stop Valve	1	6
FSBVT121214C	1/2 in. Push x 1/2 in. Push x 1/4 in. O.D. Comp Chrome-Plated Brass Stop Tee Valve	1	6
FSBVA1238C	1/2 in. Push x 3/8 in. O.D. Comp 1/4-Turn Chrome-Plated Brass Angle Stop Valve	1	12
FSBVA1238C6JR	1/2 in. Push x 3/8 in. O.D. Comp 1/4-Turn Chrome-Plated Brass Angle Stop Valve (Jar)	6	12
FSBVS1238C	1/2 in. Push x 3/8 in. O.D. Comp Chrome-Plated Brass Qtr-Turn Straight Stop Valve	1	12
FSBVS1238C6JR	1/2 in. Push x 3/8 in. O.D. Comp 1/4-Turn Chrome-Plated Brass Str Stop Valve (Jar)	6	12
FSBDV01238C	1/2 in. Push x 3/8 in. O.D. Comp Brass Dual Opposed Outlet 1/4-Turn Stop Valve	1	12
FSBDVS1238C	1/2 in. Push x 3/8 in. O.D. Comp Brass Dual Inline Outlet Shut-Off 1/4-Turn Stop Valve	1	12
FSBVT121238C	1/2 in. Push x 1/2 in. Push x 3/8 in. O.D. Comp Chrome-Plated Brass Stop Tee Valve	1	6
FSBBV12	1/2 in. Brass Push Ball Valve	1	12
FSBBV12DE	1/2 in. Brass Push Ball Valve with Flange and Drain	1	12
FSBBV12F	1/2 in. Brass Push x 1/2 in. FNPT Female Ball Valve	1	6
FSBBV12SL	1/2 in. Brass Push Slip Ball Valve	1	6
FSBBV12TX	1/2 in. Brass Push Compact Ball Valve with Lockable Handle	1	12
FSBSV12WD	1/2 in. Brass Push Stop Valve with Drain	1	12
FSBVA1212M	1/2 in. Push x 1/2 in. MIP Chrome-Plated Brass 1/4-Turn Angle Stop Valve	1	6
FSBVS1212M	1/2 in. Chrome Plated Brass Push x 1/2 in. MNPT 1/4 Turn Straight Stop Valve	1	6
FSBCV12	1/2 in. Brass Push Check Valve	1	12
FSBBV312	1/2 in. Brass Push 3-Way Ball Valve	1	6
FSBFPH12	1/2 in. Push x 3/4 in. MHT Chrome-Plated Brass Telescoping Frost-Proof Hydrant	1	6
FSBGV1234	1/2 in. Brass Push x 3/4 in. GHT 1/4-Turn Drop Ear Garden Valve	1	12
FSBSCV1234	1/2 in. Brass 1/4 Turn Push x 3/4 in. GHT No Kink Hose Bibb	1	12
FSBWMAV	1/2 in. Brass Push x 3/4 in. MHT Angle Washing Machine Ball Valve	1	6
FSBWMSV	1/2 in. Brass Push x 3/4 in. MHT Straight Washing Machine Ball Valve	1	6
FSBVT343414C	3/4 in. Push x 3/4 in. Push x 1/4 in. Comp Chrome-Plated Brass Service Stop Tee	1	6
FSBBV34	3/4 in. Brass Push Ball Valve	1	12
FSBBV34DE	3/4 in. Brass Push Ball Valve with Flange and Drain	1	6
FSBBV34F	3/4 in. Brass Push x 3/4 in. FNPT Female Ball Valve	1	6
FSBBV34SL	3/4 in. Brass Push Slip Ball Valve	1	6
FSBBV34TX	3/4 in. Brass Push Compact Ball Valve with Lockable Handle	1	12
FSBBV334	3/4 in. Brass Push 3-Way Ball Valve	1	6
FSBSV34WD	3/4 in. Brass Push Stop Valve with Drain	1	12
FSBCV34	3/4 in. Brass Push Check Valve	1	12
FSBGV3434	3/4 in. Brass Push x 3/4 in. GHT 1/4-Turn Garden Valve with Drop Ear	1	12
FSBSCV3434	3/4 in. Brass 1/4 Turn Push x 3/4 in. GHT No Kink Hose Bibb	1	12
FSBPRV34WG	3/4 in. Pressure Regulator with Gauge	3	3
FSBBV1	1 in. Brass Push-To-Connect Ball Valve	6	6
FSBBV1TX	1 in. Brass Push-To-Connect Compact Ball Valve with Lockable Handle	6	6



CAPS

Part No.	Description	Pkg Qty	Carton Qty
FSBCAP38	3/8 in. Brass Push-To-Connect Cap	1	12
FSBCAP12	1/2 in. Brass Push-To-Connect Cap	1	24
FSBCAP126JR	1/2 in. Brass Push-To-Connect Cap (Jar)	6	48
FSBCAP12WD	1/2 in. Brass Push-To-Connect Cap with Drain	1	12
FSBCAP34	3/4 in. Brass Push-To-Connect Cap	1	12
FSBCAP346JR	3/4 in. Brass Push-To-Connect Cap (Jar)	6	24
FSBCAP34WD	3/4 in. Brass Push-To-Connect Cap with Drain	1	12
FSBCAP1	1 in. Brass Push-To-Connect Cap	1	3



TOOLS

Part No.	Description	Pkg Qty	Carton Qty
69PFRT	1/2 in. to 1 in. Push-To-Connect Fitting Removal Tool	1	3
FSBDC14	1/4 in. Demount Clip	1	12
FSBDC38	3/8 in. Demount Clip	1	12
FSBDC12	1/2 in. Demount Clip	1	48
FSBDC34	3/4 in. Demount Clip	1	48
FSBDC1	1 in. Demount Clip	1	24
FSBIPSDC3PK	1/2 in., 3/4 in. and 1 in. PVC IPS Demount Clips	1	12
FSBDT12	1/2 in. Push Fitting Disconnect Tong	1	6
FSBDT34	3/4 in. Push Fitting Disconnect Tong	1	6
FSBDG	3/8 in. - 1 in. Depth Gauge and Chamfering Tool	1	6



APPLIANCE OUTLET BOXES

Part No.	Description	Pkg Qty	Carton Qty
FSBBOXIM	1/2 in. Ice Maker Outlet Box	1	2
FSBBOXIMWH	1/2 in. Ice Maker Outlet Box with Water Hammer Arrestor	1	2
FSBBOXWM	1/2 in. Brass Washing Machine Outlet Box	1	3
FSBBOXWMWH	1/2 in. Brass Washing Machine Outlet Box with Water Hammer Arrestors	1	3



APPLIANCE CONNECTORS

Part No.	Description	Pkg Qty	Carton Qty
FSBBS12P18	1/2 in. Push x 1/2 in. Push x 18 in. Braided Stainless Steel Repair Hose	1	12
FSBBS34F12	3/4 in. Push x 3/4 in. FPT x 12 in. Braided Stainless Steel Water Heater Connector	1	12
FSBBS34F15	3/4 in. Push x 3/4 in. FPT x 15 in. Braided Stainless Steel Water Heater Connector	1	12
FSBBS34P18	3/4 in. Push x 3/4 in. FPT x 18 in. Braided Stainless Steel Water Heater Connector	1	12
FSBBS34F18	3/4 in. Push x 3/4 in. FPT x 18 in. Braided Stainless Steel Water Heater Connector	1	12
FSBBS34F18BV	3/4 in. Push x 3/4 in. FPT x 18 in. Braided Stainless Steel Water Heater Connector with Ball Valve	1	12
FSBCSST34F18	3/4 in. Push x 3/4 in. FPT x 18 in. Corrugated Stainless Steel Water Heater Connector	1	12
FSBBS34F24	3/4 in. Push x 3/4 in. FPT x 24 in. Braided Stainless Steel Water Heater Connector	1	12
FSBCSST34F24	3/4 in. Push x 3/4 in. FPT x 24 in. Corrugated Stainless Steel Water Heater Connector	1	12
FSBBS34P1F24	3/4 in. Push x 1 in. FPT x 24 in. Braided Stainless Steel Water Softener Connector	1	6



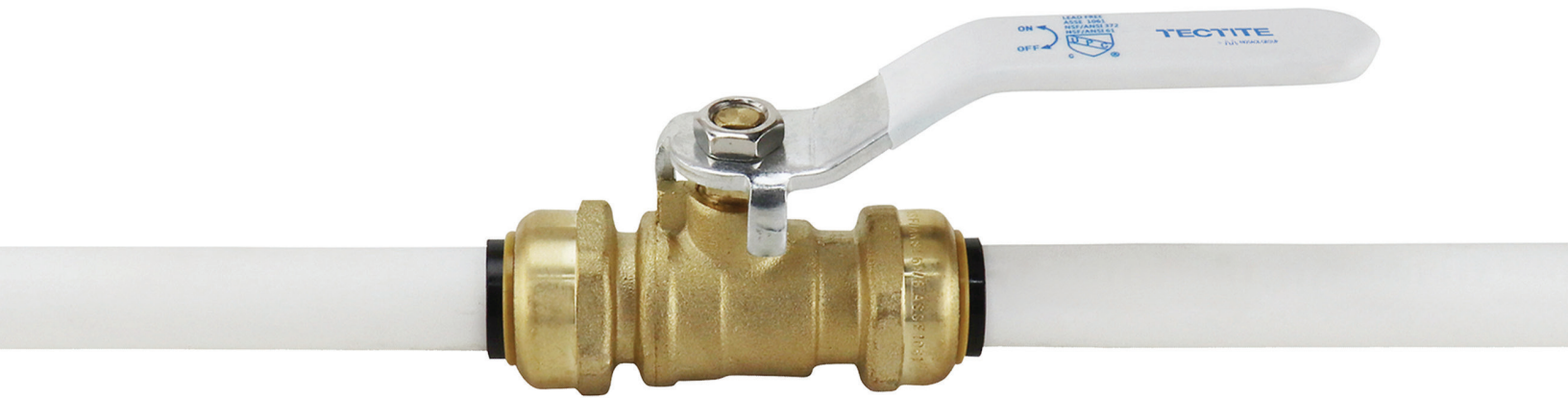
ACCESSORIES

Part No.	Description	Pkg Qty	Carton Qty
FSBWHKIT	3/4 in. x 3/4 in. FIP Water Heater Connection Kit	1	3
FSBTANKKIT	Water Heater Installation Kit with Tank Tee	1	3
FSBSHOWKIT	1/2 in. Push Brass Shower/Tub Installation Kit	1	3
FSBSTUB8	1/2 in. Push x 8 in. Copper Stub-Out Elbow	1	6
FSBFAU14	1/4 in. (3/8 in.) x 1/4 in. Comp. Stop Valve Connector	1	6
FSBFAU1438	1/4 in. CTS x 3/8 in. OD Faucet Connector	1	6
FSBFAU1412	1/4 in. (3/8 in. O.D.) Push x 1/2 in. Chrome-Plated Brass Faucet Connector	1	6
FSBTA141438C	1/4 in. Push x 1/4 in. Push x 3/8 in. O.D. Comp Chrome-Plated Brass Stop Valve Tee	1	6
FSBFAU1478	1/4 in. (3/8 in. O.D.) Push x 7/8 in. Female Ballcock Chrome-Plated Brass Straight Toilet Connector	1	6
FSBTANKTEE	3/4 in. Push-To-Connect x FPT x FPT Water Heater Expansion Tank Tee	1	5

TERMS & CONDITIONS

1. Seller's acceptance of the offer represented by this purchase order issued by The Mosack Group, Inc., is expressly limited and subject to these Terms and Conditions, irrespective of any other terms or conditions proposed by Seller. Any such terms or conditions proposed by Seller are hereby rejected by The Mosack Group, Inc., and shall be void and unenforceable.
2. Delivery in whole or in part of the goods to be furnished hereunder shall constitute acceptance of this order, subject to these Terms and Conditions. This is the entire contract between The Mosack Group Inc. and Seller concerning the subject hereof, and no changes of any kind whatsoever are binding on The Mosack Group Inc. unless they are in writing and signed by an authorized representative of The Mosack Group Inc..
3. Seller must provide the goods as indicated on this purchase order and/or therein designated documents. Seller shall not substitute any materials without The Mosack Group Inc.'s written consent. Seller shall indicate The Mosack Group Inc. purchase order number on the shipping documents, which shall indicate Sellers full compliance with the requirements of this order and therein designated documents.
4. When partial shipments are made for the convenience of Seller, additional transportation costs shall be paid entirely by Seller. Any partial or early shipment must be agreed to in writing by The Mosack Group Inc.
5. Blanket orders are subject to firm pricing, to be released over one year from date of first receipt of goods, unless otherwise agreed to in writing by The Mosack Group Inc.
6. Do not execute this order at higher pricing than shown, or previously charged without our written consent.
7. Seller shall deliver the goods to The Mosack Group Inc. on the date(s) indicated in this purchase order. If Seller fails to make delivery of any part of the goods on the date(s) indicated, The Mosack Group Inc. may terminate the purchase order and have no further obligation hereunder, and pursue all other available remedies.
8. All tooling shall remain the property of The Mosack Group Inc., and subject to return upon The Mosack Group Inc.'s request, without additional charge.
9. Seller agrees to comply with all local, state and federal laws, regulations and orders pertaining to the fulfillment of this purchase order, including without limitation, all such laws and regulations regarding equal employment nondiscrimination and affirmative action, if any, specifically including but not limited to the provision of Title VII of the Civil Rights Act of 1964, Executive order 11246 Section 503 of the Rehabilitation Act of 1973, Section 402 of the Vietnam Era Veterans Readjustment Assistance Act, The Toxic Substance Control Act, The Occupational Safety and Health Act, The National Labor Relations Act, The Immigration Reform and Control Act and all binding rules, regulations and relevant orders of any regulatory bodies issued pursuant to any of the above.
10. Seller agrees to indemnify, defend and hold harmless The Mosack Group, Inc. and its successors and assigns from and against any and all claims, demands, liabilities, costs, suits or actions, including all reasonable expenses, attorney fees, lost profits, consequential damages or any other type of damage, including without limitation, injuries to or the death of any person and loss of or damage to any property, including the property of The Mosack Group, Inc. (collectively, "Losses"), alleged to have been caused, in whole or in part, by or resulting from the goods and/or services covered by this purchase order or any breach hereof, or negligence of Seller or its employees, agents, or subcontractors. Without limiting the generality of the foregoing, Seller agrees to indemnify, defend and hold harmless The Mosack Group, Inc. and its successors and assigns from and against any and all Losses arising from or otherwise related to any actual or alleged infringement of any intellectual property rights, including without limitation, patent and trademark rights.
11. All purchase orders, including The Mosack Group, Inc. Terms and Conditions, transmitted electronically constitute binding contracts and are deemed to be the equivalent of written and signed documents.
12. Any and all disputes arising from or otherwise related to this purchase order or these Terms and Conditions shall be resolved exclusively through binding arbitration under the Rules of Arbitration of the International Chamber of Commerce by one or more arbitrators appointed in accordance with said Rules. The place of arbitration shall be Charlotte, North Carolina, USA. The arbitration shall be conducted entirely in English.
13. This purchase order and these Terms and Conditions shall be governed by the law of North Carolina, USA.

PO Terms and Conditions (Rev.A 1/1/2019)



11210 Allen Station Drive
Mint Hill, NC 28227

www.mosackgroup.com
1-888-229-2874

TMG-Wholesale-Catalog-Tectite_03/23/26