

## SUBMITTAL SHEET

# PEX-A

## Manifolds

Apollo Expansion PEX Manifolds are designed for potable water systems with the use of PEX-A pipe to control the flow of water to all fixtures.

All Apollo Expansion PEX Manifolds comply with the U.S. Safe Water Drinking Act (SDWA) and the 2011 U.S. Reduction of Lead in Drinking Water Act by containing equal to or less than 0.25% lead.

The inlets to the manifold are 1" Male Straight Thread. The outlets on each side of the manifold are 3/4" MPT. The two inlet adapters that come with the manifold are 3/4" NPMT x 3/4" PEX. The shutoff valves that come with each manifold are 3/4" FPT w/ Swivel x 1/2" PEX.

### Specifications:

Use Apollo Expansion PEX Manifolds with Apollo PEX-A pipe and fasten using expansion sleeves. Follow all instructions included with tools, fittings, and fasteners.

### Approvals:

- ASTM F877
- NSF/ANSI 14 and 61

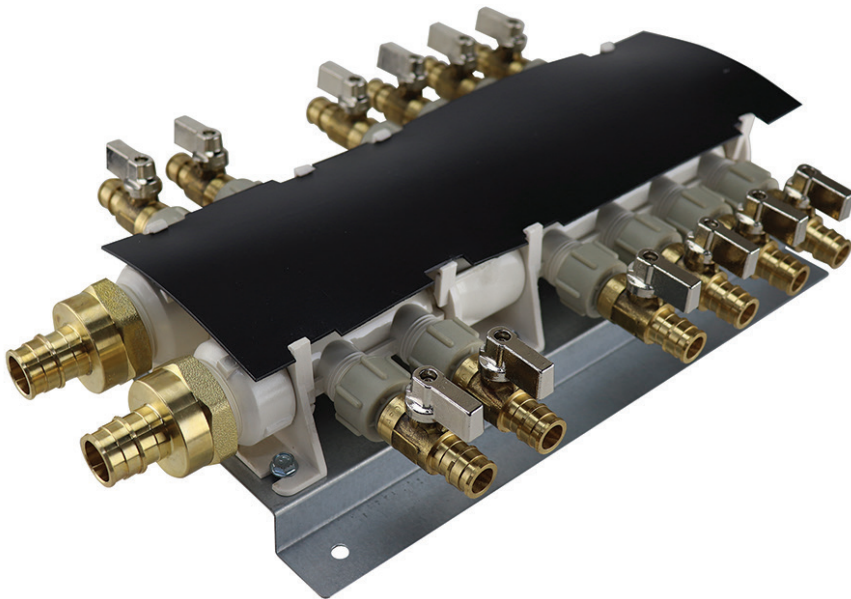
### Pressure & Temperature:

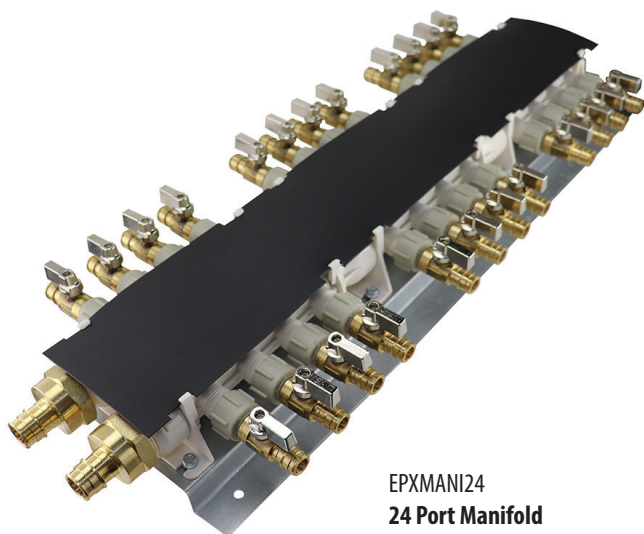
- 160 psi @ 73° F, 100 psi @ 180° F

### Installation:

1. Count the number of cold and hot water locations in the house. Be sure to include outside hose bibs and the refrigerator ice maker.
2. Make sure the manifold has as many ports as the house has hot and cold locations.
3. Find an accessible location near the water heater, but not closer than 18" from the water heater outlet, to place the manifold.
4. Attach the shut off valves.
5. Position the manifold in the desired location and nail or screw the mounting bracket to the studs. Make sure all valve handles have room for operation.
6. Attach 1/2" PEX pipe to the inlets and outlets and crimp or clamp securely. Close and cap all unused manifold ports.
7. Label each connection to the water location it supplies. Labels are included with each Apollo Expansion PEX manifold.

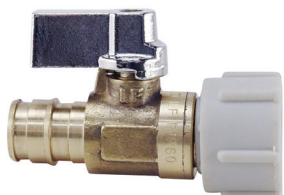
Job Name:	
Job Location:	
Engineer:	
Contractor:	
Tag:	
PO Number:	
Representative:	



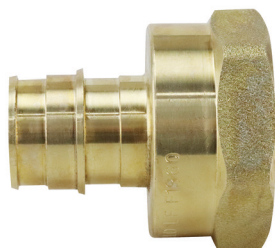


EPXMANI24  
24 Port Manifold

Manifolds					
Part Number	Description	L	W	D	Wt (lbs)
EPXMANI12	PEX-A 12 Port Manifold	13.00"	8.75"	3.38"	4.75
EPXMANI16	PEX-A 16 Port Manifold	15.50"	8.75"	3.38"	5.46
EPXMANI20	PEX-A 20 Port Manifold	22.00"	8.75"	3.38"	7.47
EPXMANI24	PEX-A 24 Port Manifold	26.00"	8.75"	3.38"	8.15
EPXMANI28	PEX-A 28 Port Manifold	28.25"	8.75"	3.38"	10.11
EPXMANI32	PEX-A 32 Port Manifold	31.25"	8.75"	3.38"	11.27
EPXMANI36	PEX-A 36 Port Manifold	35.25"	8.75"	3.38"	12.93



EPXFF1212SDV  
Replacement Valve



EPXNPSM34  
Replacement Inlet Adapter