

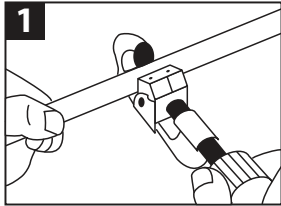
# PUSH TO CONNECT

## INSTRUCTION SHEET

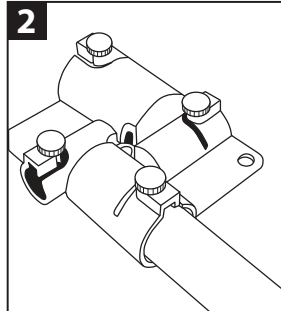
### Push To Connect

# Tectite by Mosack Group Fittings

#### Push Installation

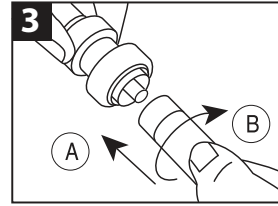


Cut pipe.



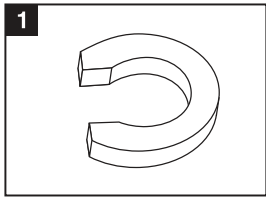
Mark insertion depth using the depth gauge (sold separately).

See table below for insertion depths.

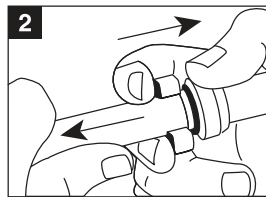


Push pipe (A) and twist (B) into fitting until fitting edge meets depth line.

#### Push Removal



Removal tool (sold separately).



Place tool around pipe next to fitting. Press tool toward fitting while pulling pipe from fitting.

After assembly, fittings may be rotated for simpler installation in tight spaces.

Fittings can be used with Copper, CPVC, PE-RT, or PEX pipe. They are removeable and reusable. Install Tectite by Mosack Group fittings wet or dry. Tube liners (included) are required to join PEX tubing.

Pipe Depth for Tectite Fittings	
Fitting/Pipe Size	Insertion Depth
1"	1-5/16"
3/4"	1-1/8"
1/2"	15/16"
3/8"	15/16"

**TECTITE**  
by  **MOSACK GROUP**

is-Tectite\_01/20/21

The Mosack Group, Inc.  
Mint Hill, NC 28227  
1.888.229.2874  
[www.apolloflow.com](http://www.apolloflow.com)